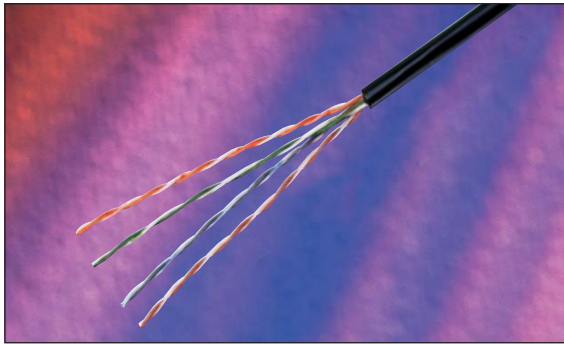


Excel Category 6 Unshielded Twisted Pair (UTP) Cable - External Grade



25 Year System Warranty

Category 6 Compliant

- TIA/EIA 568-B.2-1
- EN50173-1
- ISO/IEC 11801

Features

- Category 6 compliant
- Central 'X' filler
- 25 year system warranty
- 23AWG conductor
- Fast Feed Reelex Packaging
- '305-0' metre marked
- UV and Moisture Resistant Polyethelene Outer Sheath
- BSRIA Number 1 private label, by market share for the last three years

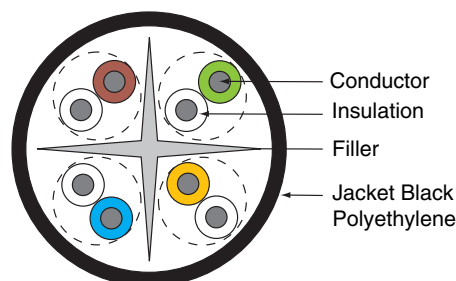
Product Overview

Excel Category 6 UTP cables are manufactured and tested to the TIA/EIA 568-B.2-1, EN50173-1 and ISO/IEC 11801 Category 6 specifications. Each cable consists of 8 colour coded 23AWG polyethylene insulated conductors. These are twisted together to form 4 pairs with varying lay lengths. These pairs are then formed around a central 'X' shaped polyethylene filler. This filler assists in maintaining and enhancing the cables performance. A jacket of UV and moisture resistant polyethelene is applied making this cable ideal for outdoor installation.

The printing detail along the outer sheath includes the cable part code, specification detail and our new 305 to 0 metre marked system. As the cable is dispensed from the box the sequential marking counts down from 305 to 0 metres, as well as reducing waste and accounting easily for cables installed, this innovative print legend finally removes the guesswork from assessing the amount of cable remaining in partly used boxes.

Due to the risk of lightning damage both ends of the external cable must be fitted with equipment suitable of protecting the computer system and operators from a direct or indirect lightning strike. These devices are available in many forms, but are usually system specific and you will need to contact the manufacturer of these devices to ensure the requirements of the network is met.

Excel recommends the use of optical fibre in all external cabling, and any damage to the cabling system due to lightning strikes is solely at the risk of the installer.



Specification

UV and Moisture Resistant Polyethylene Outer Sheath

Nominal Overall Diameter

6.3mm

Operation Temperature Range

-10°C to +75°C

Bend Radius

4 x overall diameter installed, 8x installing

4 x 23AWG polyethylene insulated copper conductors
central 'X' shaped polyethylene filler

Performance Overview

Excel Category 6 cables are manufactured and tested to the Category 6 performance standards defined by the EIA/TIA, ISO and EN standards bodies. A range of performance characteristics are tested upto 250MHz including return loss, attenuation and near and far end crosstalk (NEXT and FEXT) for which both worst case and power sum tests are completed. Actual performance far exceeds the required standard – when tested in isolation and in circuit – resulting in significant headroom for even the most demanding of applications.

As well as providing link and channel compliance with the aforementioned specification – when installed with Excel category 6 components – the cable is also backward compatible with Category 5 and 5e components.

Performance / Specification Table

Frequency (MHz)	Return loss (dB)	Attenuation (dB/100m)	NEXT (dB)	PSNEXT (dB)	FLEXT (dB/100m)	PSELFEXT (dB/100m)	Delay (ns/100m)
1	20.0	2.0	66.0	64.0	67.8	64.8	570.0
4	23.0	3.8	65.3	63.3	55.8	52.8	552.0
10	25.0	6.0	59.3	57.3	47.8	44.8	545.4
16	25.0	7.6	56.2	54.2	43.7	40.7	543.0
20	25.0	8.5	54.8	52.8	41.8	38.8	542.0
31.25	23.6	10.7	51.9	49.9	37.9	34.9	540.4
62.5	21.5	15.4	47.4	45.4	31.9	28.9	538.6
100	20.1	19.8	44.3	42.3	27.8	24.8	537.6
150	18.8	24.7	41.7	39.7	24.3	21.3	536.9
200	18.0	29.0	39.8	37.8	21.8	18.8	536.5
250	17.3	32.8	38.3	36.3	19.8	16.8	536.3

Nominal velocity of propagation (NVP 67%)

System Warranty

When installed with Excel Category 6 cables and components by an accredited Excel Cabling Partner, this product is supported by a comprehensive 25 year product and applications warranty. This warranty assures not just standard compliance but also backward compatibility with Category 5 and 5e cables and components.

Typical Applications

- 100 Base-TX
- 1000 Base-TX Gigabit Ethernet
- Composite Video
- Token Ring
- 155 Mbps ATM
- 622 Mbps ATM

Part Number Information

Part No.	Description
100-100	Excel Category 6 Cable Black, 305mtr Fast Feed Box



Adept Networks Ltd
Unit 63, Pembroke Centre, Cheney Manor Ind Estate
Swindon, Wilts, SN2 2PQ, GB

Tel: 01793 432444 Fax: 01793 432324
Email: sales@adeptnetworks.co.uk Web: www.adeptnetworks.co.uk