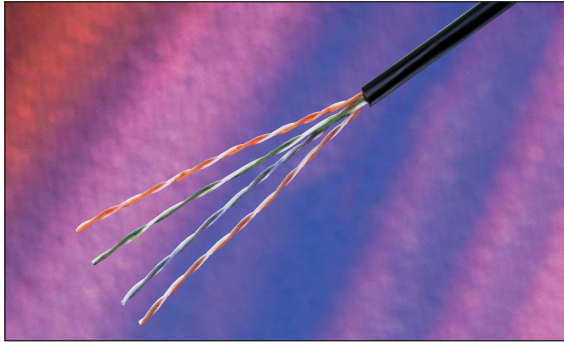


## Excel Category 5e Unshielded Twisted Pair (UTP) Cable - External Grade



25 Year System Warranty

Supports Gigabit Ethernet

Metre Marked 305-0

### Features

- Category 5e compliant
- Power Sum Compliant
- 25 Year System Warranty
- 305 to 0 Metre Marked
- UV and Moisture Resistant Polyethelene Outer Sheath
- BSRIA Number 1 private label, by market share for the last three years

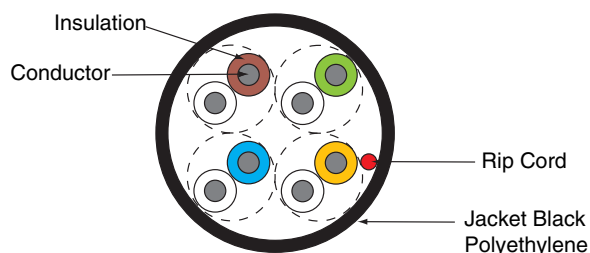
### Product Overview

Excel Category 5e UTP Cables are manufactured, tested and verified to the ISO11801 EIA/TIA standards for enhanced performance Category 5e cables.

Each cable consists of 8 colour coded polyethelene insulated conductors. These are twisted together to form 4 pairs with varying lay lengths. These pairs, together with a strong nylon rip cord are jacketed in a heat and UV, moisture resistant black polyethylene outer sheath, make this cable ideal for outdoor installation. The printing detail on the sheath, includes the cables part number, specification details and a unique 305-0 metre marking within each box supplied, allowing for quick and easy measurement of cable installed and the amount remaining within the box.

Due to the risk of lightning damage both ends of the external cable must be fitted with equipment suitable of protecting the computer system and operators from a direct or indirect lightning strike. These devices are available in many forms, but are usually system specific and you will need to contact the manufacturer of these devices to ensure the requirements of the network is met.

Excel recommends the use of optical fibre in all external cabling, and any damage to the cabling system due to lightning strikes is solely at the risk of the installer.



### Specification

UV and Moisture Resistant Polyethelene Outer Sheath

Nominal Overall Diameter

5.2mm

Operation Temperature Range

-10°C to +75°C

Bend Radius

4 x overall diameter installed, 8x installing

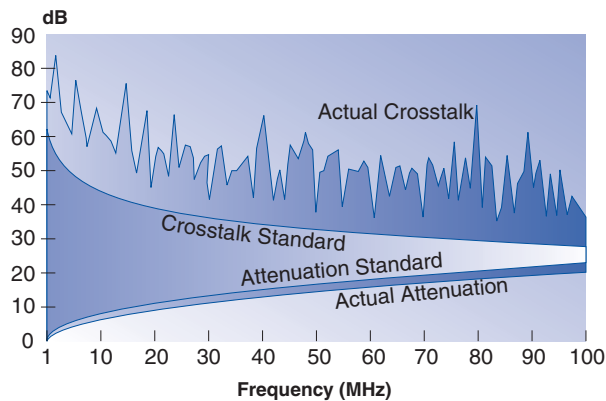
4 x 24AWG polyethelene insulated copper conductors

## Performance Overview

Excel Category 5e cables are manufactured and tested to the Category 5 enhanced standards as defined by the EIA/TIA and ISO standards' bodies. Swept frequency tests are applied to each critical performance characteristic, such as near end cross talk (NEXT) and far end cross talk (FEXT). Both Worst Case and Power Sum Test methods are applied. Actual performance exceeds the required standard by a considerable margin ensuring sufficient headroom for even the most demanding applications.

## Performance Table

Frequency (MHz)	Impedance (ohm)	SRL (dB)	Attenuation (dB/100m)	NEXT Worst Pair (dB)	NEXT Power Sum (dB)	ELFEXT Worst Pair (dB)	ELFEXT Power Sum (dB)	Velocity of Propagation (%)
0.772		—	1.8	67	64	—	—	
1.0		19	2.0	66	62	64	61	
4.0		20.8	4.1	57	53	52	49	
8.0		21.7	5.8	52	48	46	43	
10.0		22	6.5	51	47	44	41	
16.0	100 ± 15	22	8.2	48	44	40	37	70
20.0		22	9.3	46	42	38	35	
25.0		21.3	10.4	45	41	36	33	
31.25		20.6	11.7	43	39	34	31	
62.5		18.5	17.0	39	35	28	25	
100.0		17.1	22.0	36	32	24	21	



## System Warranty

When installed with Excel Patch Panels and Data Outlets by an accredited Excel Cabling Partner, this product is supported by a comprehensive 25 year product and applications warranty.

## Typical Applications

- 10 Base-T
- 100 Base-TX
- Token Ring
- 1000 Base T Gigabit Ethernet
- 155 Mbps ATM
- 622 Mbps ATM

## Part Number Information

Part No.	Description
100-090	Excel Category 5e Cable Black, 305MTR Fast Feed Box



Adept Networks Ltd  
 Unit 63, Pembroke Centre, Cheney Manor Ind Estate  
 Swindon, Wilts, SN2 2PQ, GB

Tel: 01793 432444 Fax: 01793 432324  
 Email: sales@adeptnetworks.co.uk Web: www.adeptnetworks.co.uk